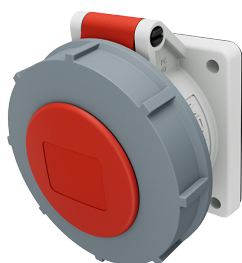


## Panel mounted receptacle

Bestillingsnr. 234A

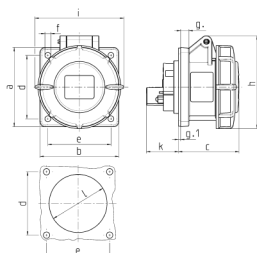


- Skrukontakt
- Rett stikkretning

## Tekniske spesifikasjoner

Ampere	32 A
Poler	4 p
Volt	400 V
Klokkeposisjon	6 h
Hertz	50-60 Hz
Tilkoblingsmåte	skrukontakt
Kontakt	standard
Kapslingsgrad	IP67
Flens	85x75 mm
Borehull	60x60 mm
Vekt	293 g
Kontrollmerke	VDE, EAC

## Dimensjoner



Drawing 1 MB 141	Amp. Poles	16			32		
		3	4	5	3	4	5
Dim. in mm	a	75	75	75	85	85	85
	b	75	75	75	75	75	75
	c	60	61	61	70	70	72
	d	60	60	60	60	60	60
	e	60	60	60	60	60	60
	f	5.5	5.5	5.5	5.5	5.5	5.5
	g	8	8	8	8	8	8
	g-1	2	2	2	2	2	2
	h	83	88	95	99	99	105
	i	78	85	96	103	103	110
	k	31	32	32	39	39	39
	l	43	52	54	58	58	65
Terminal for cond. cross section (mm <sup>2</sup> ) min.-max.		1.5	1.5	1.5	2.5	2.5	2.5
		-4	-4	-4	-10	-10	-10