

## Panel mounted inlet

Part no. 75316

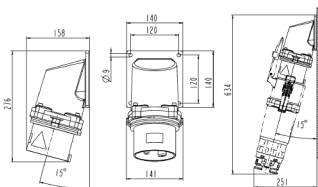


- screw terminals
- 15° inclination
- seawater resistant products are available on request

## Technical specifications

Ampere	200 A
Poles	5 p
Voltage	400 V
Clock position	6 h
Hertz	50-60 Hz
Connection technology	Screw terminals
Contact	standard
Protection type	IP 67
Weight	3340 g

## Drawing



Drawing  
2 MB 247  
Dim. in mm